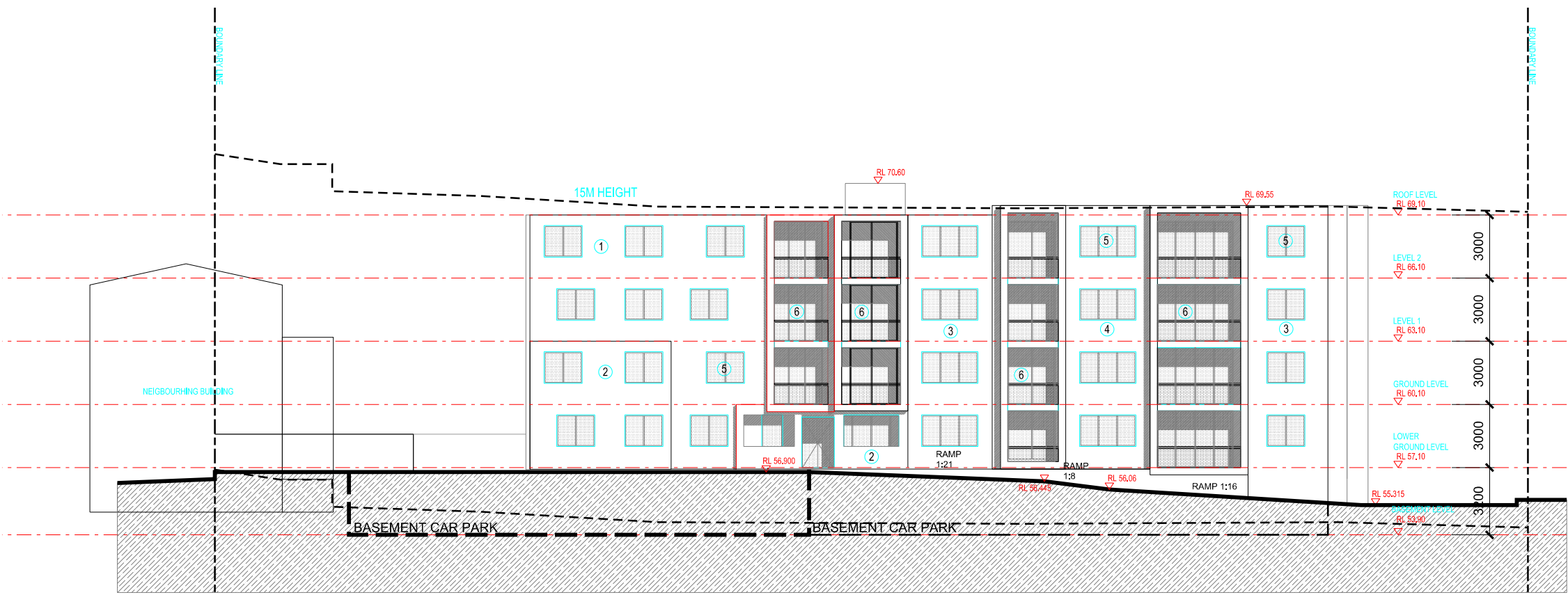


dem

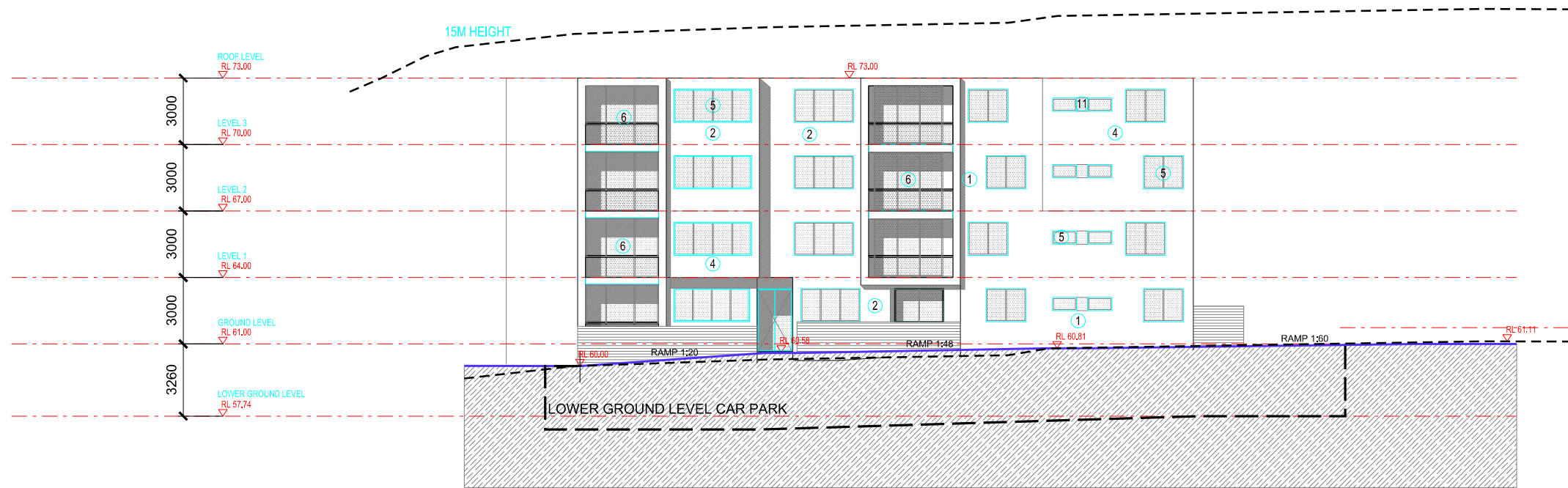
- NOTES
- * ALL DIMENSIONS, SIZES, ETC. ARE IN MILLIMETRES. FIGURED DIMENSIONS TO BE USED IN PREFERENCE TO SCALING OF DRAWING.
 - * THIS DRAWING TO BE READ IN CONJUNCTION WITH ELECTRICAL, MECHANICAL, HYDRAULIC, DETAIL STANDARD DRAWINGS AND CONSTRUCTION SUMMARY.
 - * EXTERNAL METALWORK SPECIFIED AS GALVANISED SHALL BE HOT DIPPED GALVANISED TO CONFORM TO AUSTRALIAN STANDARDS.
- EXTERNAL FINISHES LEGEND
1. FACE BRICK OR PAINTED PREFABRICATED WALL SYSTEM - LIGHT CREAMY COLOUR
 2. FACE BRICK OR PAINTED PREFABRICATED WALL SYSTEM - LIGHT RED COLOUR
 3. FACE BRICK OR PAINTED PREFABRICATED WALL SYSTEM - LIGHT BROWN COLOUR
 4. FACE BRICK OR PAINTED PREFABRICATED WALL SYSTEM - LIGHT BLUE GREY COLOUR
 5. ALUMINIUM FRAMED GLAZING
 6. ALUMINIUM FRAMED SLIDING DOORS
 7. ALUMINIUM FRAMED METAL LOUVRES
 8. METAL ROLLER DOOR
 9. METAL GRILLES
 10. TIMBER LOUVRES
 11. PAINTED MASONRY - GREY COLOUR



01 ELEVATION 5
BLOCK F NORTH ELEVATION



02 ELEVATION 6
BLOCK E NORTH ELEVATION



03 ELEVATION 7
BLOCK C EAST ELEVATION

Phoenix Palm - 351 Hume Highway Bankstown

SECTION 96

any reports, drawings, advice or information included or referenced that is prepared and/or provided by any other party, including the client/principal, is the sole representation of the party who prepared the report/drawings, advice or information and does not constitute a representation by dem (aust) pty limited. dem (aust) pty limited expressly takes no responsibility for any documents, advice or other material prepared by any other party.

A	01-11-13	SECTION 96	GR	F	xx-04-15	COUNCIL REVISION	ET	ET
B	02-12-13	REVISION	GR					
C	10-12-14	COUNCIL REVISION	SE					
D	08-02-15	ISSUE FOR COORDINATION	VI	ET				
E	20-03-15	LEGEND UPDATED	VI	ET				

© copyright of dem (aust) pty limited abn 92 085 486 844.

plotted: 13/04/2015

plotted by: hnair

SECTION A&B EAST ELEVATIONS

date
xx-04-15

scale
1:250

dwg no.
A302

proj no.
4347-00

rev no.
F

planning, urban design, architecture,
landscape architecture, interior design
level 8 15 help street chatswood nsw 2067
t: (02) 8966 6000 f: (02) 8966 6111
e: sydney@dem.com.au